

FLOWTECH[®] FLOW SWITCH

Model : FM4-GP

VANE TYPE FLOW SWITCH

**Factory Calibrated | Durable
Versatile | Industrial Flow Switch**

FLOWTECH[™] FLOW SWITCH Model : FM4-GP

Applications

- Chillers / Heat Exchangers / Dryer water flow supervision
- Hydraulic / Lubrication oil systems oil flow supervision
- Compressors cooling water flow supervision
- Refrigeration Systems
- Dry run protection for pumps



FEATURES

- **FLOWTECH[®] FLOW SWITCH**
Model: **FM4-GP** offers stainless steel 316L metal bellow for enduring performance and guaranteed operation with high repeat accuracy for reliable performance.
- **FLOWTECH[®] FLOW SWITCH**
Model: **FM4-GP** offers potential free SPDT type of switching, to suit most application needs. Optional potential free DPDT switching on offer.
- **FLOWTECH[®] FLOW SWITCH**
Model: **FM4-GP** offers Polycarbonate enclosure with IP-65 as per IEC:60529 protection class rating with metallic cable gland for safe wiring connections.
- **FLOWTECH[®] FLOW SWITCH**
Model: **FM4-GP** offers wide range of material of construction, pipeline sizes choices & high pressure up to 22 bar also on offer as option.
- **FLOWTECH[®] FLOW SWITCH**
Model: **FM4-GP** offers precisely factory calibrated flow setting as per your process requirements & specifications.
- **FLOWTECH[®] FLOW SWITCH**
Model: **FM4-GP** offers durable & rugged construction based on proprietary flow switch platform.

FLOWTECH is a registered trade mark of Mukund Electricals, Solapur, INDIA

Page 1 of 3



MUKUND ELECTRICALS.

'Flowtech House'
139, Industrial Estate, Hotgi Road,
Solapur - 413 003, Maharashtra - INDIA.
Ph. : +91-(0)217 - 2602488
Email : info@flowtech.co.in
Website : www.flowtech.co.in



ISO 9001:2015

www.tuv.com
ID 9105051506



Model : FM4-GP

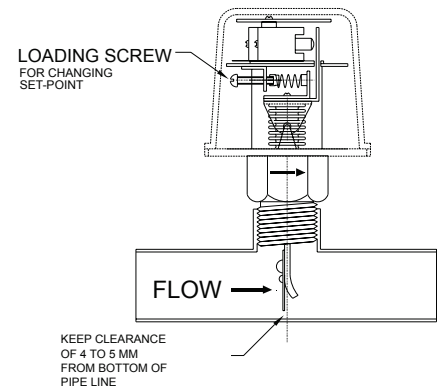
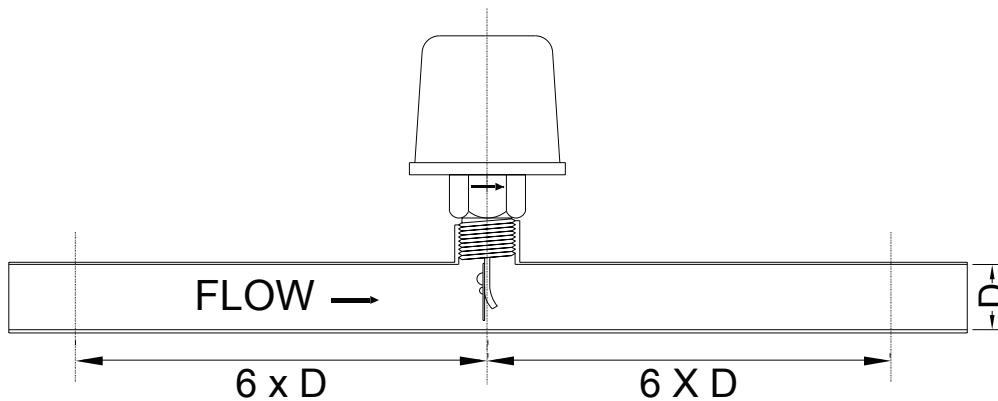
VANE TYPE FLOW SWITCH

FLOWTECH[™] FLOW SWITCH Model : FM4-GP

Additional Configurable Options

- Low flow from 5 LPM configurations
- 20 NB (3/4") process connections via proprietary Mild Steel & SS-316 Tee options.
- Pipeline size up to 250 NB (10") in diameter.
- Working Pressure upto 22 bar optional
- Optional horizontal cable entry connection.
- Potential free change over contact DPDT in single enclosure change over contacts

Typical Installation



Technical Specifications

- SPDT potential free change over contact rating max.15A 250 VAC 50 Hz pilot duty. / 10A 24VDC pilot duty
- Maximum std. pressure 11 bar. ■ Polycarbonate enclosure with IP-65 as per IEC:60529 ■ Repeat accuracy 2%
- 1" BSP (M) process connection ■ 1/2" cable gland provided with the flow switch for easy wiring installation
- Upto 300 NB (12") pipeline size options on request. ■ High Pressure 22 bar option on request ■ For water & Lub Oil
- Max. temperature 150 deg. C. ■ DPDT potential free change over contact in single micro switch option

FLOWTECH is a registered trade mark of Mukund Electricals, Solapur, INDIA

Page 2 of 3



MUKUND ELECTRICALS.

'Flowtech House'
139, Industrial Estate, Hotgi Road,
Solapur - 413 003, Maharashtra - INDIA.
Ph. : +91-(0)217 - 2602488
Email : info@flowtech.co.in
Website : www.flowtech.co.in

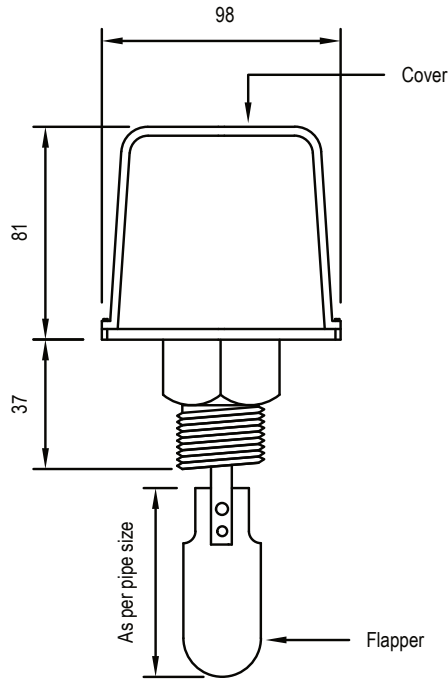


ISO 9001:2015

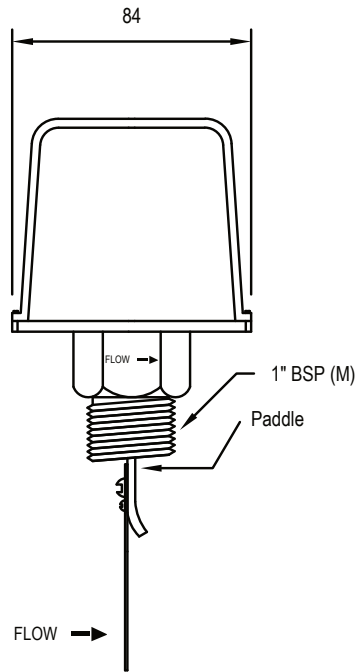
www.tuv.com
ID 9105051506



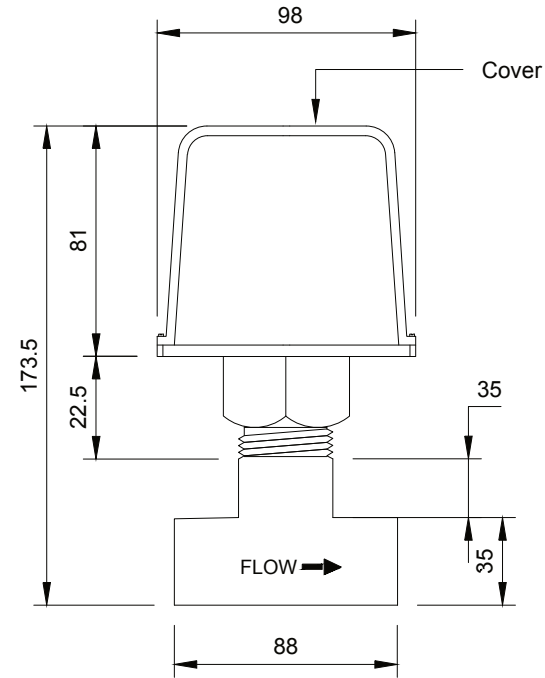
General Arrangement Drawing



Front View



Right Hand Side View



With Mild Steel & SS-316 Proprietary Tee



MUKUND ELECTRICALS.

'Flowtech House'
139, Industrial Estate, Hotgi Road,
Solapur - 413 003, Maharashtra - INDIA.
Ph. : +91-(0)217 - 2602488
Email : info@flowtech.co.in
Website : www.flowtech.co.in



ISO 9001:2015

www.tuv.com
ID 9105051506

