

# FLOWTECH<sup>®</sup> FLOW SWITCH

Model : FFS-KMS Air

VANE TYPE FLOW SWITCH

Durable | Adjustable | Easy To Use  
Industrial Air Flow Switch

FLOWTECH<sup>™</sup> FLOW SWITCH Model : FFS-Air

RANGE 3 m/s to 9.1 m/s

RANGE 590 fpm to 1800 fpm

## Applications

- Monitoring air flow in large air ducts
- Alarm applications indicating no air flow in ducts.
- Blower air no-flow alarm system.
- Air flow alarms in HVAC systems

## FEATURES

- **FLOWTECH<sup>®</sup> FLOW SWITCH**  
Model: **FFS-Air** offers a high repeat accuracy with reliable performance and guaranteed operation.
- **FLOWTECH<sup>®</sup> FLOW SWITCH**  
Model: **FFS-Air** offers potential free SPDT type of changeover contacts. To suit your application needs.
- **FLOWTECH<sup>®</sup> FLOW SWITCH**  
Model: **FFS-Air** offers large single flapper to fit duct size of 8 inch (203mm) x 8 inch (203mm), making it a versatile flow switch.
- **FLOWTECH<sup>®</sup> FLOW SWITCH**  
Model: **FFS-Air** offers ABS enclosure with IP-65 protection class rating.
- **FLOWTECH<sup>®</sup> FLOW SWITCH**  
Model: **FFS-Air** is suitable for air & compatible gas flows
- **FLOWTECH<sup>®</sup> FLOW SWITCH**  
Model: **FFS-Air** offers wide operating velocities range starting from 3 m/s (591 fpm) to 9.1 m/s (1800 fpm)
- **FLOWTECH<sup>®</sup> FLOW SWITCH**  
Model: **FFS-Air** offers easy set-point adjustment on site. With the standard readily available tools.
- **FLOWTECH<sup>®</sup> FLOW SWITCH**  
Model: **FFS-Air** offers a easy electrical connections via PG-9 cable gland for safe wiring connections.



FLOWTECH is a registered trade mark of Mukund Electricals. Solapur. INDIA

Page 1 of 3



### MUKUND ELECTRICALS.

'Flowtech House'

139, Industrial Estate.Hotgi Road.

Solapur - 413 003. Maharashtra - INDIA.

Ph. : +91-(0)217 - 2602488

Email : info@flowtech.co.in

Website : www.flowtech.co.in

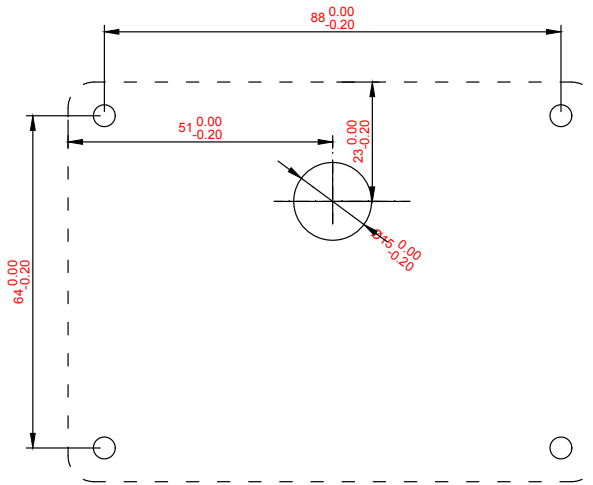


ISO 9001:2015

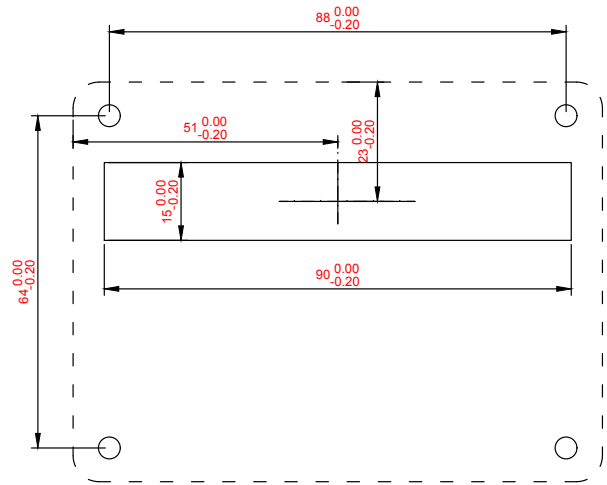
www.tuv.com  
ID 9105051506



### Typical Installation



Installation without flapper (vane) pre-attached



Installation with flapper (vane) pre-attached

All Dimensions in MM

### Technical Specifications

- ABS enclosure with IP - 65 protection class.
- Mounting Orientation - Horizontal | Vertical (*on request*)
- Flapper provided suitable for large rectangular duct of 8 inch (203mm) x 8 inch (203mm)
- Electrical Connections via PG-9 cable gland provided with the flow switch.
- Repeat accuracy is 1%
- SPDT potential free change over contact rating Max.15A 250 VAC 50 Hz, 0.5A 250VDC pilot duty.
- Temperature Range -10 deg C to 150 deg. C.
- Wetted Materials : Vane-SS | Lever - Brass | Base Plate - Powder Coated Mild Steel
- Set-point Adjustment - Internal
- Humidity Limits: 10 to 90%, non-condensing.



#### MUKUND ELECTRICALS.

'Flowtech House'

139, Industrial Estate.Hotgi Road.

Solapur - 413 003. Maharashtra - INDIA.

Ph. : +91-(0)217 - 2602488

Email : info@flowtech.co.in

Website : www.flowtech.co.in

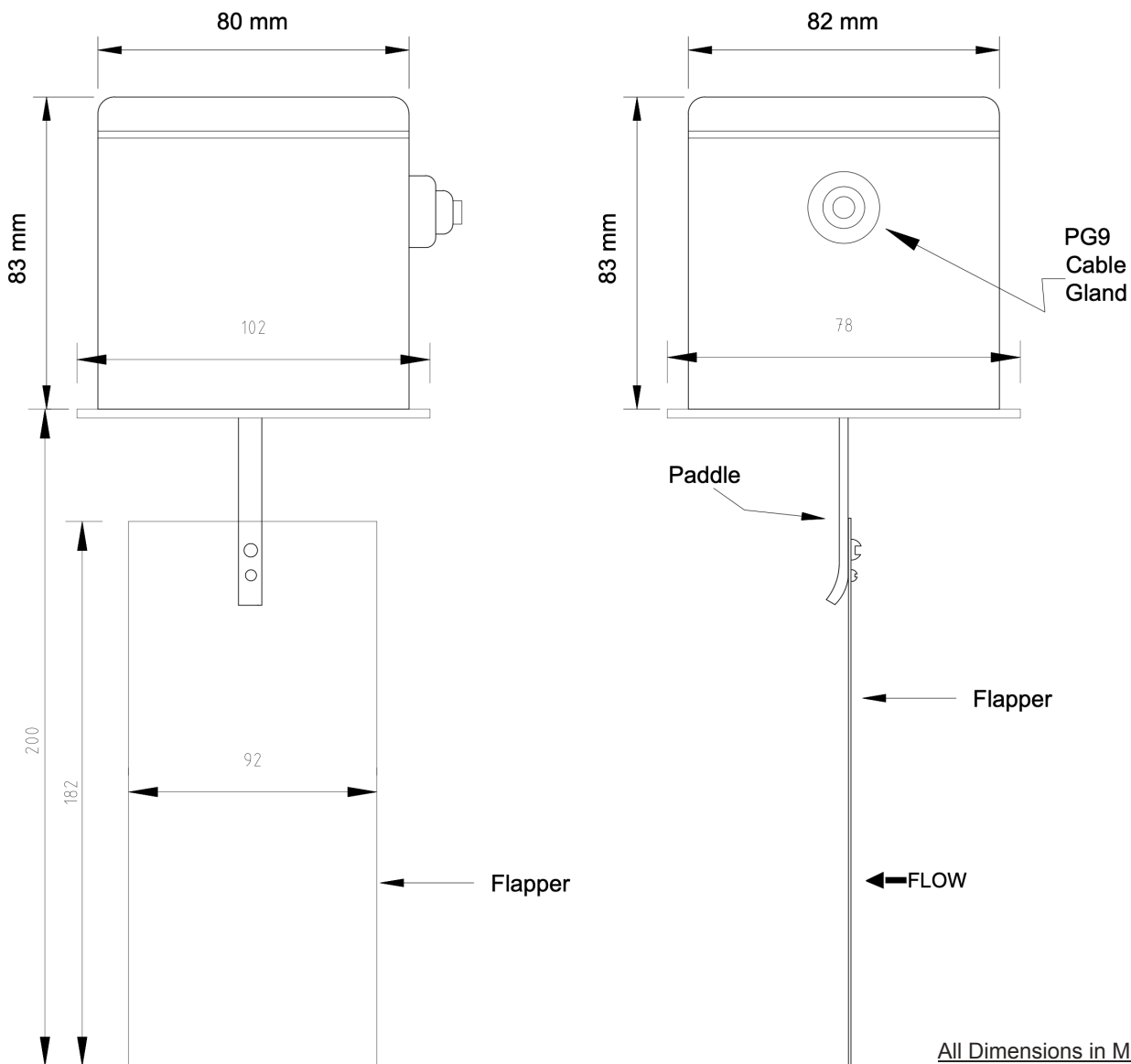


ISO 9001:2015

www.tuv.com  
ID 9105051506



## General Arrangement Drawing



### MUKUND ELECTRICALS.

'Flowtech House'

139, Industrial Estate.Hotgi Road.

Solapur - 413 003. Maharashtra - INDIA.

Ph. : +91-(0)217 - 2602488

Email : info@flowtech.co.in

Website : www.flowtech.co.in



ISO 9001:2015

www.tuv.com  
ID 9105051506

