

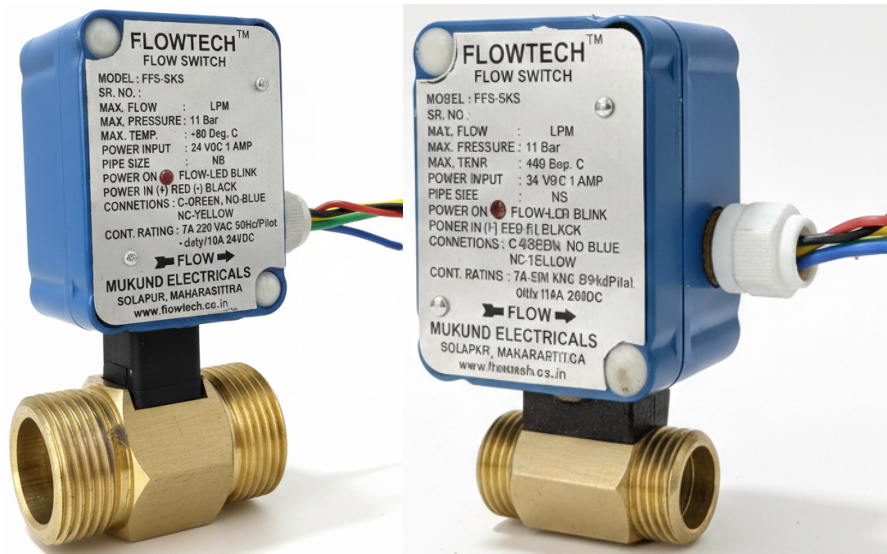
Model : FFS-SKS

P.D. FLOW SWITCH

FLOWTECH® FLOW SWITCH Model : FFS-SKS

### Applications

- Dry run protection for pumps
- R.O. water purification systems
- C.N.C Coolant monitoring systems
- Lubricating Oil circulation systems
- Flow indication & Flow switch applications
- Heat pump water circulation monitoring
- Water & Oil cooling systems & loops.



### FEATURES

- **FLOWTECH® FLOW SWITCH FFS-SKS**  
Offers a reliable performance. Suitable for water and oil as flow medium
- **FLOWTECH® FLOW SWITCH FFS-SKS**  
Offers SPDT type potential free change over contact switching, to suit most application needs.
- **FLOWTECH® FLOW SWITCH FFS-SKS**  
Offers ABS enclosure with IP-65 enclosure protection class
- **FLOWTECH® FLOW SWITCH FFS-SKS**  
Offers an in-built run on timer function, to prevent signal hunting effect.
- **FLOWTECH® FLOW SWITCH FFS-SKS**  
Offers flow indicator LED which indicates status of the flow in pipeline
- **FLOWTECH® FLOW SWITCH FFS-SKS**  
Offers robust brass body in two connection options of 1/2 inch & 1 inch BSP male threaded connection



**Model : FFS-SKS**

P.D. FLOW SWITCH

FLOWTECH<sup>®</sup> FLOW SWITCH Model : FFS-SKS

### Flow Indicator Function



No Light

**Power OFF**  
device not  
turned ON

Solid RED  Not Blinking

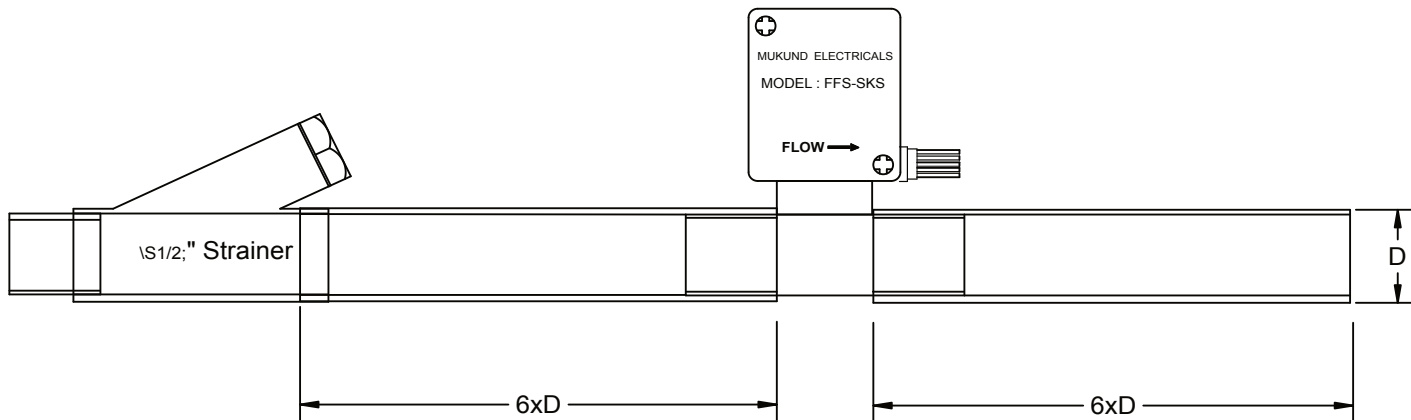
**Power ON**  
NO-Flow



RED  Blinking

**Media flowing**  
through pipeline

### Typical Installation



All dimensions are in MM

### Technical Specifications

- SPDT potential free change over contact rating max.7A, 230 VAC 50 Hz pilot duty / 10A 24VDC
- Maximum pressure 11 bar ■ Max. temperature 80 Deg.C ■ Flow range - 3 to 30 lpm (1/2 inch) / 5 to 50 lpm (1inch)
- 1/2" BSP (M) & 1" BSP (M) process connection ■ Power required 24 VDC 1 amp (smcs)
- ABS enclosure IP-65 protection class ■ Flow indicator LED ■ M.O.C for body - Brass



#### MUKUND ELECTRICALS.

'Flowtech House'  
139, Industrial Estate.Hotgi Road.  
Solapur - 413 003. Maharashtra - INDIA.  
Ph. : +91-(0)217 - 2602488  
Email : info@flowtech.co.in  
Website : www.flowtech.co.in



ISO 9001:2015

www.tuv.com  
ID 9105051506

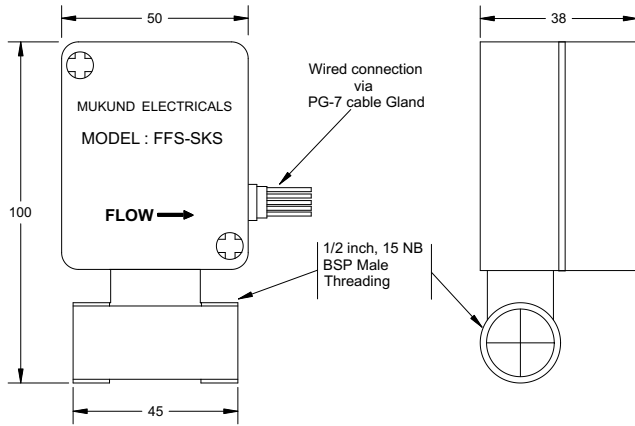


**Model : FFS-SKS**

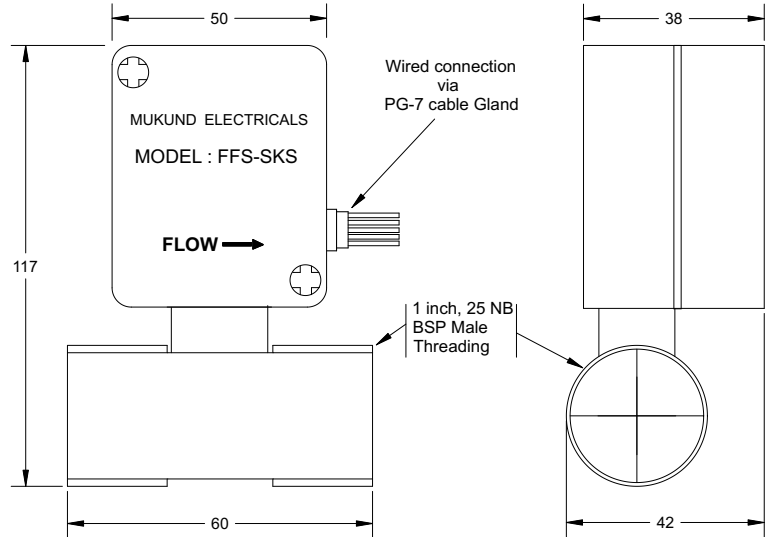
**P.D. FLOW SWITCH**

**FLOWTECH® FLOW SWITCH Model : FFS-SKS**

**G.A. 1/2 inch / 15 NB pipe size**



**G.A. 1 inch / 25 NB pipe size**



**Electrical Connections**

